

2025

*Central Virginia & Hampton Roads*

EXCELLENCE

IN CONSTRUCTION

AWARDS



Virginia  
2025 Excellence  
in Construction®  
Awards



OCTOBER 23, 2025

THE MAIN, NORFOLK, VA



# YOUR CONSTRUCTION INSURANCE PROS

Customized solutions for the unique risks and needs of your industry. Contact us today to learn how the Towne team can put decades of construction insurance experience to work for you.

**BUSINESS INSURANCE | SURETY | EMPLOYEE BENEFITS | PRIVATE CLIENT INSURANCE**

TowneInsurance.com | 800-486-4611 |   

Insurance products offered through Towne Insurance, a subsidiary of TowneBank, are Not a deposit, Not FDIC-Insured, Not guaranteed by TowneBank, Not insured by any government agency, and May go down in value.



# 12<sup>TH</sup> ANNUAL EXCELLENCE IN CONSTRUCTION AWARDS

On Thursday, October 23, the Virginia chapter of Associated Builders & Contractors, Inc. (ABC) honored Hampton Roads and Central Virginia contractors at our 12th annual Excellence in Construction (EIC) Awards.

ABC Virginia (ABC-VA) contractors entered several projects in the following categories: Commercial; Drywall; Educational-Public & Private Schools; Electrical; Federal; Historic Restoration; Institutional; Interiors; Masonry; Mega Project; Mechanical; Medical - New Construction; Mixed-Use; Residential Multi-Family; Specialty General Construction; and Specialty MEP.

These winning projects highlight and honor the extraordinary teamwork between general contractors,

specialty contractors, material suppliers, architects, and engineers. The winners were then classified into three categories: Honor, Merit, and Honorable Mention. While all categories exemplify excellence in construction, the judges scored the Honor Award winners higher for overcoming scheduling, technical and other obstacles.

Additionally, there were over 30 nominations for employees deemed instrumental in member companies' success. Winners of the Employee of the Year awards include Project Manager, Field Manager, Estimator, Project Administrator, Craft Professional, Young Professional, Craft Instructor, and Apprentice. Congratulations to all these extraordinary professionals!

## THIS EVENT IS MADE POSSIBLE BY THE TIRELESS EFFORT OF OUR EIC COMMITTEE

**Mike Reff, Chair**, Towne Insurance  
**Valerie James, Vice Chair**, Mark Turner Construction  
**Cali Bridgeman**, Heartland Construction  
**Josette Furjanic**, R K Chevrolet, Inc.

**Anthony Garcia**, Retro Insulation  
**Rob Sinclair**, Allan Myers  
**Chris Spates**, Clancy & Theys Construction Company  
**Matthew Wilson**, Morgan Marrow Company

## AND TO OUR JUDGES: THANK YOU FOR VOLUNTEERING YOUR TIME

**Earl Inge**, Speight, Marshall & Francis, P.C.  
**Rob Reis**, Hanbury  
**Darlene Hart**, ABC Virginia

**Jennifer Miles**, Sales Solutions, Inc.  
**Mike Reff**, Towne Insurance  
**Tom Retnauer**, RBA Architects



PROGRAM SPONSORS

COMMERCIAL (\$20M+)

COMMERCIAL (\$20M+)

# FEED MORE DISTRIBUTION CENTER & COMMUNITY KITCHEN RICHMOND, VA

Thoughtfully designed and precisely constructed, the Feed More Distribution and Community Kitchen brings together the logistics of a high-bay warehouse, the complexity of a commercial kitchen, and the heart of a community mission under one roof. Every decision, from structural sequencing to finish selection, was made in service of a singular goal: to help Feed More reach more Virginians, more efficiently, and with greater dignity.



Delivered ahead of a critical holiday deadline, this facility is already making an impact stocking shelves, welcoming volunteers, and preparing thousands of meals each week. It's a model for mission-driven construction that elevates both performance and purpose. In every sense, it's a project built to serve and built to last.

**ABC-VA TEAM MEMBERS**  
M & E Contractors, Inc.  
Tolley Electrical Corporation

*Overall Winner*

ABC-VA proudly recognizes Hourigan's Feed More Distribution Center & Community Kitchen as the 2025 Overall Winner for its exceptional technical execution, project complexity, challenges overcome, and meaningful community impact.

# SPRINGLINE OFFICE AT DISTRICT 60 RICHMOND, VA

**ABC-VA TEAM MEMBERS**  
Acoustical Thermal Spray, Inc.  
American Door & Glass, Inc.  
E. Caligari & Son, Inc.  
Ferguson Enterprises, LLC  
Hanover Specialties, LLC  
Hercules Fence  
J.D. Long Masonry of VA, Inc.  
James River Nurseries, Inc.  
M & E Contractors, Inc.  
Old Dominion Mechanical  
Prospect Waterproofing Company  
Specified Tile & Floor Covering, Inc.

Springline Office at District 60 is the cornerstone of Chesterfield County's bold reimagining of its eastern gateway. This five-story, 150,000-sf office building is the flagship vertical development within the broader mixed-use Springline at District 60 master plan, transforming the former Cloverleaf Mall and Beaufont Mall sites into a vibrant, multi-block destination for business, government, and community life.



The project was a strategic public-private collaboration designed to anchor the redevelopment effort and attract quality tenants, which currently include Timmons Group, Chesterfield Economic Development Authority (CEDA), and Chesterfield County Public Schools (CCPS). The result is a high-performance, future-ready office building that sets the tone for the neighborhood's architectural identity and economic momentum.

HOURIGAN



HOURIGAN

MERIT

HONOR

## BLUE POINT - NEW REALM BREWING COMPANY SUFFOLK, VA

BALICORE Construction is proud to showcase the completion of the New Realm Brewing Company's Suffolk location, a standout addition to the Blue Point at the Riverfront development in the Harbour View area of Suffolk, Virginia. Purpose-built for one of the most progressive names in craft brewing, the facility spans 12,000 square feet across two stories and introduces a bold new vision for brewery spaces. This project also includes a 4,000-square-foot rooftop patio and an 8,000-square-foot outdoor beer garden and live music venue, combining experiential architecture with a deep focus on hospitality, functionality, and guest engagement.



### ABC-VA TEAM MEMBERS

Alaric Drywall Corporation  
All-Star Glass & Mirror Inc.  
Comfort Systems of Virginia, Inc.  
Gerloff Painting, Inc.  
Overhead Door Company of Norfolk

## HAMPTON FIRE STATION #3 HAMPTON, VA

### ABC-VA TEAM MEMBERS

Hercules Fence  
Professional Fire Protection Systems

Syncon successfully completed the construction of Hampton Fire Station #3, a new 17,045-square-foot facility in Hampton, Virginia, designed to replace the outdated Wythe Fire Station #3. Valued at \$10 million and delivered through an open market bid, this modern fire station enhances the city's fire and emergency response capabilities while prioritizing operational efficiency, safety, and responder well-being.



This one-story fire station is forward-thinking, featuring four pull-through apparatus bays for seamless vehicle access, a decontamination room, EMS storage, a tool/compressor shop, and an exterior equipment room. The facility includes administrative offices, a Captain/Lieutenant's Suite, private quarters and bath facilities for firefighters and EMS personnel, comfortable living spaces, a fully equipped kitchen, dining areas, and laundry facilities.



COMMERCIAL (\$5-20M)

## COURTHOUSE VETERINARY CLINIC VIRGINIA BEACH, VA

TST Construction completed the ground-up construction of the Courthouse Veterinary Clinic & Pet Boarding facility, a purpose-built veterinary hospital located on a three-acre site in Virginia Beach, Virginia. This expansive, state-of-the-art facility spans over 11,600 square feet, with an additional 2,300-square-foot attic level, and was designed to provide advanced medical, surgical, and rehabilitation services for companion animals.



TST Construction worked closely with the owner and design team to ensure the project met both its technical requirements and the client's vision. Through proactive planning and expert execution, the team successfully delivered a complex, highly specialized facility. The Courthouse Veterinary Clinic & Pet Boarding facility now stands as a benchmark for veterinary care in the Hampton Roads region and a testament to TST's commitment to quality.

**ABC-VA TEAM MEMBERS**  
All Star Glass & Mirror, Inc.  
Excel Paving Corporation  
Hercules Fence  
Professional Fire Protection Systems  
Sheely Contractors  
TST Roofing & Glazing  
United Rentals, Inc.

## RUSSELL MEMORIAL LIBRARY ADDITION CHESAPEAKE, VA

**ABC-VA TEAM MEMBERS**  
Eure, Inc.  
McDrake Enterprises, LLC  
Professional Fire Protection Systems  
VSC Fire & Security

Syncon proudly delivered a transformative 2,646 square foot addition to the Russell Memorial Library in Chesapeake, Virginia, enhancing this vital community resource. This project expanded the children's reading room, added modern study spaces, introduced innovative sensory-friendly areas to inspire young learners, and updated a 30-year-old system to make it more up-to-date and efficient.



The Syncon team maintained meticulous coordination and proactive planning with their client, delivering the project on time without compromising quality. Through the different long lead time items, Syncon was able to complete the project based on the original contract completion date.



HONORABLE MENTION



HONORABLE MENTION

COMMERCIAL (UNDER \$2M)

## DARWIN LINARES INSTRUCTOR OF THE YEAR



Darwin consistently brings a wealth of industry knowledge and a genuine passion for education into the training environment. Through carefully structured lessons and hands-on guidance, he ensures that each apprentice not only understands the technical aspects of their craft but also gains the confidence to apply

those skills in real-world settings. Most importantly, he highlights safety in every facet of construction.

Beyond teaching, Darwin embodies the values of professionalism, patience, and continuous improvement. He fosters a collaborative learning atmosphere where every apprentice feels supported and challenged to reach their full potential. The success of his students, many of whom have gone on to thrive as insulators, is a direct reflection of his influence and commitment.

His apprentices see the program as a way to grow, and they see each other and the instructors as family, due to Darwin's influence. His ability to engage the students and personally connect with each of them is astonishing.



## ANTONIO "TJ" LOMBA APPRENTICE OF THE YEAR



TJ began his journey in the HVAC field at the Chesapeake Career Center, completing his first year of apprenticeship before joining Comfort Systems as a second-year apprentice. In June of that year, he became part of the Commissioning Team and immediately distinguished himself.

From day one, TJ embraced every opportunity to learn, grow, and contribute. His commitment to mastering the craft is evident both in the field and in the classroom. This past August, TJ proudly graduated as a fourth-year apprentice.

His impact goes far beyond technical ability. TJ's positive attitude, bright outlook, and contagious smile make him a joy to work with and a valued member of every team he joins. His peers and mentors alike appreciate his upbeat demeanor, reliability, and willingness to go the extra mile.

These qualities have made him not only an outstanding technician but also an inspiring leader among his fellow apprentices.



## WESTMINSTER CANTERBURY RICHMOND VIBRANCY! EXPANSION RICHMOND, VA

### ABC-VA TEAM MEMBERS

Capital Interior Contractors, Inc.  
CB Flooring, LLC  
ColonialWebb Contractors  
J.S. Archer Company, Inc.  
James River Nurseries, Inc.  
Roof Services, a Tecta America Company, LLC  
Scaffolding Solutions, LLC  
Watson Electrical Construction Company, LLC

Westminster Canterbury Richmond's Vibrancy! Expansion was a bold, transformative initiative delivered by a Henderson, Inc., and Gilbane Building Company joint venture. At \$210M and approximately 300,000 square feet, the project redefines the standard for senior living.

The expansion added a striking multi-level Vital Living Center tower featuring luxury apartments, a wellness center, and underground parking. Additional components included a beautifully appointed clubhouse, a new maintenance building, a large parking garage, a refreshed Avalon entrance, four new Village Apartment buildings (two Type A and two Type B), and a temporary corridor to maintain essential campus access. Together, these elements brought a full range of modern social, dining, and wellness amenities to the Westminster Canterbury campus.



© JIM SINK

© JIM SINK



## VT HITT HALL AND PERRY PLACE BLACKSBURG, VA

Hitt Hall/Perry Place at Virginia Tech exemplifies a modern, multi-purpose university facility that integrates academics, research, and student life. The 100,000-sf, three-story building expands the Myers-Lawson School of Construction, introduces essential dining venues, and adds general academic spaces in a unified structure. The design team collaborated with diverse stakeholders to merge functional and aesthetic elements into one cohesive facility.



“Hitt Hall is a welcomed addition to the North Academic District,” said Travis Jessee, interim Assistant Vice President for Design and Construction. “The collaboration and dedication of Cooper Carry and W.M. Jordan have ensured a highly coordinated and intentional development process.”

### ABC-VA TEAM MEMBERS

Acoustical Thermal Spray, Inc.  
Atlantic Constructors, Inc.  
Campostella Builders & Supply Corp.  
Falconer Construction Company  
Liphart Steel Company, Inc.  
Total Hardware, Inc.

## HU KITTRELL HALL SCHOOL OF PHARMACY RENOVATION HAMPTON, VA

### ABC-VA TEAM MEMBERS

Baron Communications  
David R. Hall, Inc.  
Gerloff Painting, Inc.  
JRC Mechanical, LLC  
Macsons, Inc.  
Nycom, Inc.  
Professional Fire Protection Systems

Named after Dr. Flemmie P. Kittrell, the first African American woman to earn a Ph.D. in nutrition, the newly renovated Kittrell Hall at Hampton University is a two-story, 19,264-square-foot facility dedicated to the School of Pharmacy.



The updated space now includes state-of-the-art laboratories, a mock pharmacy, specialized exam rooms, and modern classrooms, all designed to support an immersive, hands-on learning environment. With upgrades to building systems and energy efficiency, Kittrell Hall provides an optimized, comfortable setting that meets the high standards of contemporary pharmacy education. The renovation reflects Hampton University’s commitment to advancing healthcare education while preserving its historic campus.



## NEW CRESTWOOD ELEMENTARY SCHOOL CHESAPEAKE, VA

The new Crestwood Elementary School, a \$64.9 million, 138,000-square-foot educational facility, exemplifies excellence in execution, innovation, and collaboration under pressure. The project involved the full construction of a modern educational facility designed to serve an incoming student population of more than 800 students and approximately 150 teachers and staff members. The building features extensive mechanical, electrical, and plumbing systems, including nine rooftop HVAC units and over 50 electrical panels.



Through strategic planning, rapid response to unforeseen conditions, and an unwavering commitment to excellence, the Heartland team delivered a state-of-the-art educational facility that exceeded expectations on every front.

### ABC-VA TEAM MEMBERS

- Aggreko
- Comfort Systems of Virginia, Inc.
- Dominion Contract Carpets, Inc.
- ECS Mid-Atlantic, LLC
- Eure, Inc.
- Gerloff Painting, Inc.
- Ketchum & Walton Co.
- Roof Services, a Tecta America Company, LLC
- Scaffolding Solutions, LLC
- Southern Material Handling, Inc.
- Staff Zone
- Summit Fire & Security
- WillScot

### Allegiance Award

The Allegiance Award is given to the EIC project winner with the most ABC-VA team members on the project team.

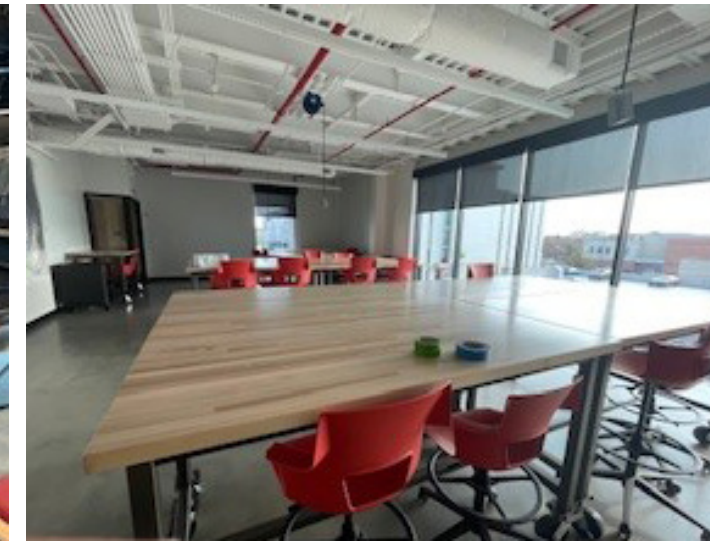
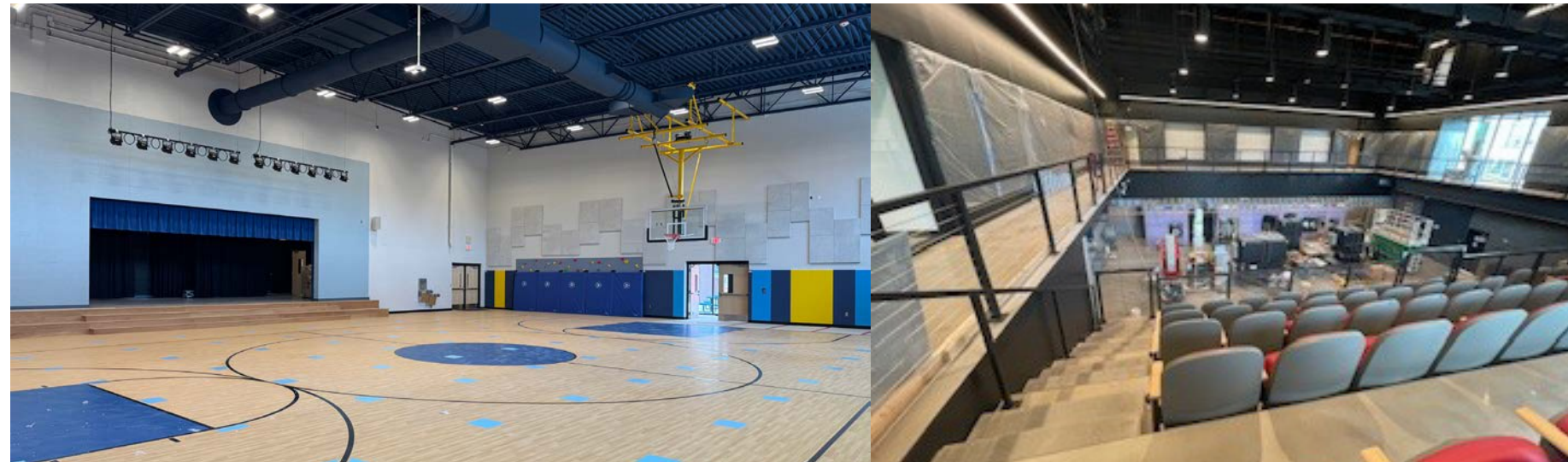
## CHRYSLER MUSEUM OF ART PERRY GLASS STUDIO EXPANSION NORFOLK, VA

### ABC-VA TEAM MEMBERS

- Bay Power Solutions
- Johnson Controls
- Mayer Electric Supply Company

The Chrysler Museum of Art Perry Glass Studio Renovation and Expansion project stands as a shining example of what can be achieved through collaboration, technical excellence, and sheer perseverance.

Power Electric's work included the installation of electric utility vaults and duct banks, site lighting, and emergency generator systems supported by multiple automatic transfer switches (ATSs). One of the project's most intricate challenges involved the need to integrate new service gear into the addition and eventually remove the existing studio's service entirely, back feeding it from the new service infrastructure to ensure continuity. In addition, Power Electric installed advanced interior lighting systems with both localized and building-wide wireless lighting controls, mechanical and elevator power systems, and a comprehensive fire alarm and VESDA system.



**ROY VARNIER IV**  
**CRAFT PROFESSIONAL OF THE YEAR**  
 ELECTRICAL



As a licensed Master Electrician and large-project foreman at Power Electric Company, Roy has become a cornerstone of the company's success through his unwavering dedication, leadership in the field, and commitment to developing the next generation of electrical talent.

Roy's journey in the electrical trade is a testament to his work ethic

and ambition. He began his career with Power Electric as an apprentice, completing his training through the company-sponsored program and graduating in 2016. Wasting no time, he passed his journeyman exam that same year and then earned his Master Electrician license in 2017 at the earliest possible eligibility. His rapid advancement reflects both a deep technical aptitude and a drive to grow professionally in every opportunity presented.

Roy Varnier IV is not only a master of his trade, but a leader by example. His story represents what the merit shop philosophy is all about—hard work, skill, and advancement through performance. He is a craftsman, teacher, and team builder, and his influence is felt in every project and apprentice he encounters.

**LORENZO XOCUA GONZALEZ**  
**CRAFT PROFESSIONAL OF THE YEAR**  
 MECHANICAL INSULATION



Lorenzo Xocua Gonzalez is the embodiment of excellence in the skilled trades. As an HVAC and plumbing insulator, his craftsmanship is not only essential to the efficiency and longevity of mechanical systems but also critical to safety, energy conservation, and building performance.

Lorenzo leads crews on job sites with professionalism and clarity. Junior insulators look to him not only for technique but for guidance on reading blueprints, coordinating with other trades, and maintaining jobsite standards. He has taken it upon himself to mentor newer employees, often stepping into informal teaching roles that have accelerated the development of peers in his company. His calm demeanor and focus on doing the job right the first time have built a culture of pride and accountability in the teams he supervises as he leads by example.

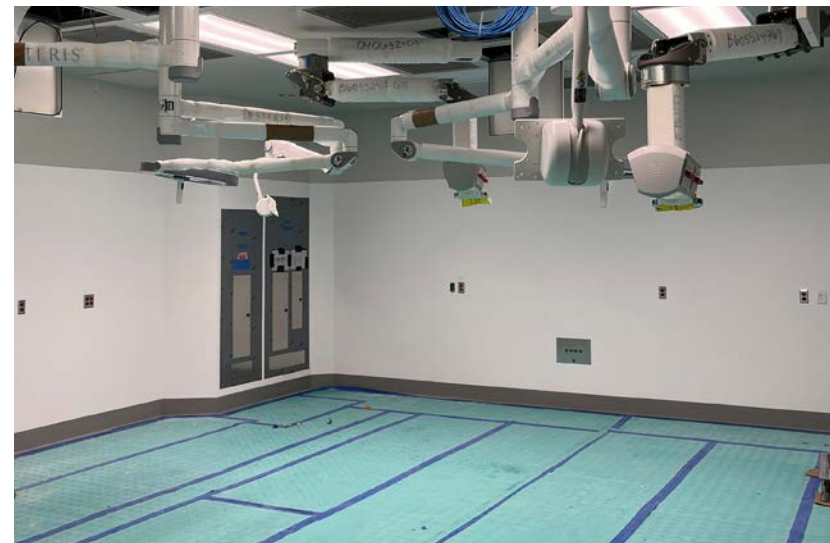
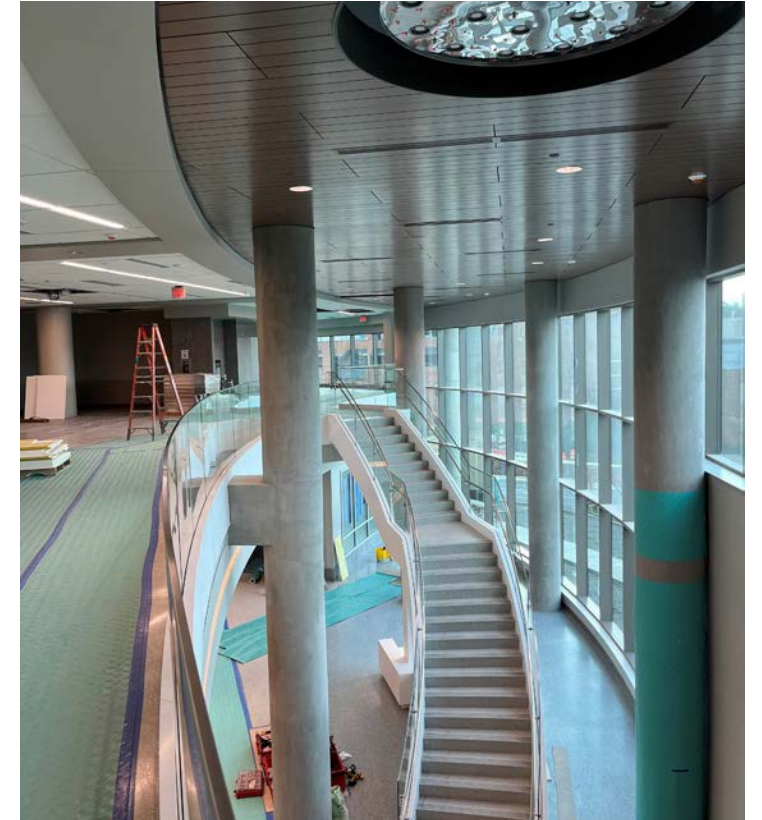
Lorenzo Xocua Gonzalez is not just an outstanding HVAC/plumbing insulator, he is a leader, mentor, and advocate for quality and safety in the skilled trades.



**CRYSTAL SPRING TOWER ADDITIONS AND RENOVATION**  
 ROANOKE, VA

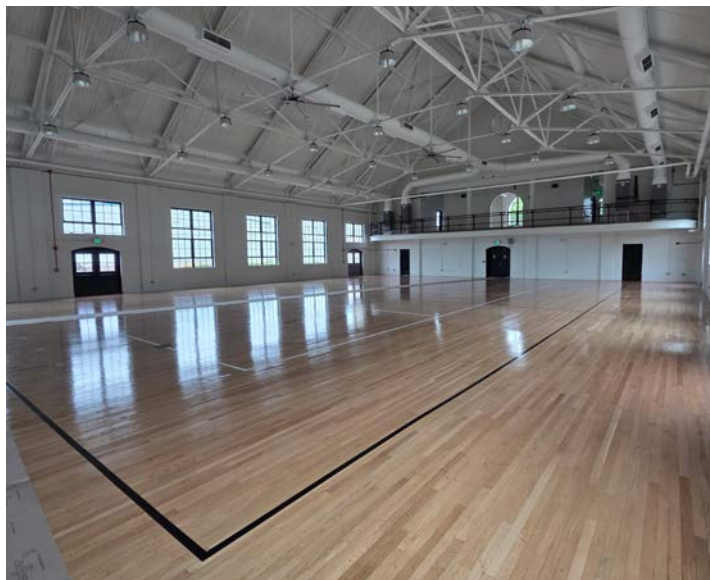
The Crystal Spring Tower Additions and Renovation project includes new operating rooms, cardiac floors, 700 beds, a bridgeway connecting the new cardiac hospital to the main general hospital, and a new parking garage constructed across an active road.

The drywall scope included exterior and interior wall framing, including insulation, drywall, and finishing. Other parts of the drywall scope included lead-lined backed drywall in X-ray designated rooms, fiber glass reinforced panels, acoustical grid and tile ceilings, and specialty wood ceilings. The Carilion Crystal Spring Hospital Tower will provide services to the greater Roanoke region and provide additional support to the community.



## HARRIS MEMORIAL ARMORY BLACKSTONE, VA

The rehabilitation of the Harris Memorial Armory is a deeply meaningful and historically significant project located in the heart of Blackstone, Virginia. Built in 1936, this 14,789-square-foot masonry structure once served as the National Guard's enlistment site for Central Virginians during wartime. When the risk of demolition loomed, the town stepped in to purchase the building from the federal government, determined to preserve its legacy.



**ABC-VA TEAM MEMBERS**  
Campostella Builders & Supply Corp.  
Capital Interior Contractors, Inc.  
Fox Cleaning Service, Inc.  
Professional Fire Protection Systems

The result: a stunning transformation of the aging facility into a hospitality training and workforce development center, in partnership with Virginia State University, Virginia Union University, and regional economic stakeholders.

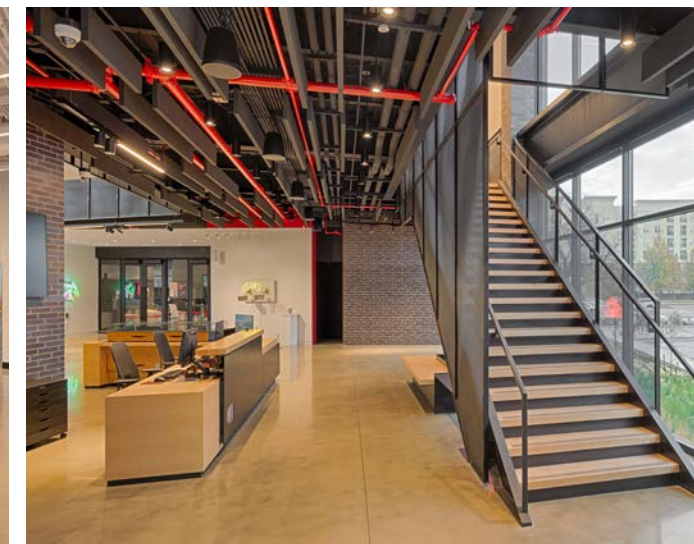
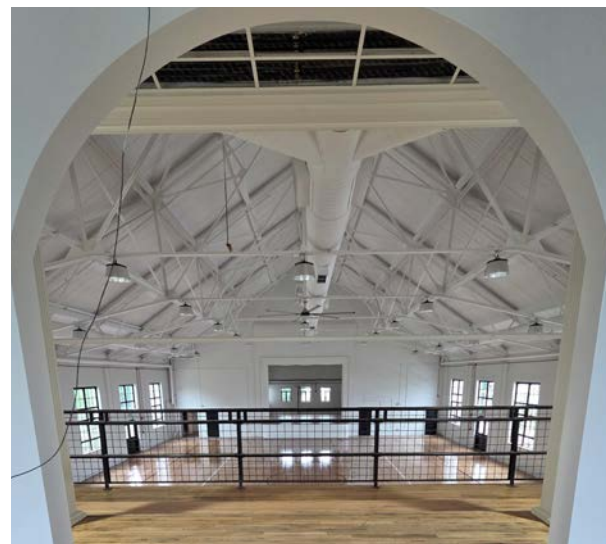
## CHRYSLER MUSEUM OF ART PERRY GLASS STUDIO EXPANSION NORFOLK, VA

**ABC-VA TEAM MEMBERS**  
Alaric Corporation  
All Star Glass & Mirror, Inc.  
Architectural Products of Virginia  
Power Electric Company  
Schultz Lawnscares, Inc.

In the heart of Norfolk's NEON District, art and architecture converge in the newly expanded Perry Glass Studio at the Chrysler Museum. This \$23.7M project is a cultural investment in the local community. With a 30,000-sf addition and a 9,000-sf renovation, this project has elevated the visitor experience and redefined what a museum can be: not just a place for passive viewing, but a hub of active creation, performance, and education.



The project team delivered a state-of-the-art facility that includes a 100-seat theater-style performance hot shop with a balcony, four furnaces, classroom and gallery space, a catering kitchen, outdoor hot shop, event and retail space, and a rooftop terrace.



HOURIGAN

HONORABLE MENTION

## NOVEL SCOTT'S ADDITION

### RICHMOND, VA

NOVEL Scott's Addition is a five-story wrap-style multifamily development featuring a seven-story corner element, located in the heart of Richmond's thriving Scott's Addition neighborhood. The project includes 275 apartment homes, ranging from studios to loft-style two-bedrooms—wrapped around a 356-space precast parking garage. The amenity package is extensive, offering residents high-end shared spaces like a saltwater pool, rooftop sky lounge, podcast recording studio, speakeasy, garden lounge, and more.



The building reflects both the industrial heritage and modern energy of the neighborhood. Inside and out, the design balances clean lines and contemporary finishes with unique touches, such as reclaimed industrial elements and curated murals.



#### ABC-VA TEAM MEMBERS

Breeden Mechanical, Inc.  
ElectriForce, Inc.  
Ferguson Enterprises, LLC  
Forsythe, Inc.  
Fox Cleaning Service, Inc.  
James River Nurseries, Inc.  
Sheely Contractors  
Tindall Corporation Virginia  
Total Hardware, Inc.

## DAVID SMITH

### YOUNG PROFESSIONAL OF THE YEAR



Since joining Heartland Construction in 2019, David has quickly become one of the company's most valuable team members and an emerging leader in the construction industry. As the youngest project manager at Heartland, David has demonstrated a level of professionalism, technical mastery, and

leadership that far exceeds his years of experience. His rapid rise within our organization is a testament to his commitment to excellence and his ability to deliver results in every aspect of project execution.

His attention to safety and detail ensures that every project meets or exceeds compliance and quality standards. His job sites are efficient, organized, and collaborative - qualities that consistently earn praise from owners and trade partners alike. David is respected for his fair, solution-oriented leadership and his ability to maintain great relationships on all sides of the project. Clients value his transparency



and professionalism, and trade partners appreciate his communication and respect for their time and expertise.

## RICK SAVAGE

### ESTIMATOR OF THE YEAR



Rick leads the estimating charge on more than 50 competitive bids a year, and he personally maintains a win rate of over 55%—in an industry where 30 something percent is considered good. That kind of consistency doesn't come from luck. It comes from Rick's precision, his discipline, and his deep knowledge of how buildings actually go together. He's worked on jobs in more than 14 states—everything from high-security government work and hospital renovations to senior living campuses and industrial plants—and he's worn multiple hats in the field. He brings all of that to every estimate.

But Rick's value isn't just in the numbers. It's in the trust he builds. Clients know that when Rick's on precon, they'll get honesty, clarity, and someone who will advocate for what's best for the project.

In a world that often celebrates the loudest or the flashiest, Rick stands out for all the right reasons. He hasn't spent his career chasing success, Rick defines it - with every estimate, every mentorship moment, and every win made possible by his steady hand and sharp skills.

The Navigator is a six-story, 215,000 square foot apartment building that reclaims a site rich in local history (formerly home to Caravati's architectural salvage and, prior to that, a Standard Oil site) and transforms it into a modern residential community that reflects the area's past while shaping its future.



The Navigator includes 177 apartment units, a 98-car parking garage, 6,300 square feet of landscaped courtyard space, and nearly 9,000 square feet of resident amenities. One level of cast-in-place (CIP) concrete podium supports five levels of wood framing, that houses studio, one-bedroom, and two-bedroom units. Amenities include a lobby lounge, bike storage, mail and package areas, a pet wash station, and a rooftop courtyard with an elevated pool.

## THE NAVIGATOR RICHMOND, VA

ABC-VA TEAM MEMBERS  
KONE Inc.

## AVIVA PEMBROKE VIRGINIA BEACH, VA

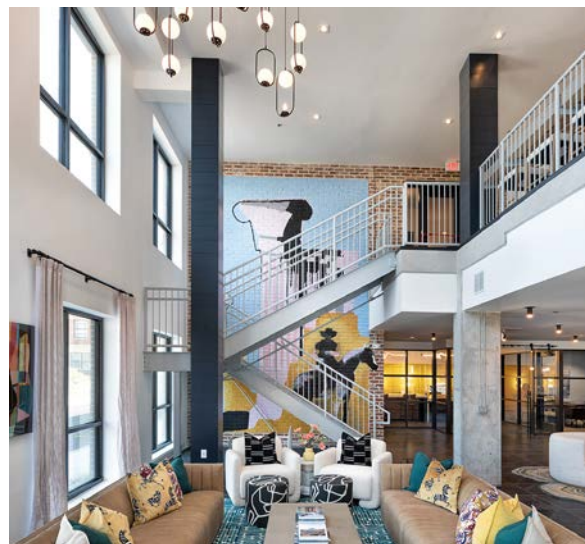
ABC-VA TEAM MEMBERS  
Alaric Drywall Corporation  
All Star Glass & Mirror, Inc.  
Architectural Products of Virginia  
Bates Contracting Services, Inc.  
Dominion Contract Carpets, Inc.  
Forsythe, Inc.  
Gerloff Painting, Inc.  
Hercules Fence  
Professional Fire Protection Systems  
Roof Services, a Tecta America  
Company, LLC  
Watson Electrical Construction  
Company, LLC  
Wilmot Modular Structures, Inc.

Aviva Pembroke is a thoughtfully designed senior living community located in the heart of Virginia Beach. As the inaugural phase of the larger Pembroke Square redevelopment, this project reimagines a former regional shopping mall as a vibrant, mixed-use destination.



The design of Aviva Pembroke prioritizes integration with the surrounding neighborhood. Independent living is offered through two-story townhomes that encircle a central, covered parking structure. This structure not only provides convenient access for residents but also supports a green roof and expansive amenity deck—enhancing both environmental sustainability and resident quality of life.

HOURIGAN



# REMEDY/CENTRA HEALTH MEDICAL OFFICE BUILDING

## LYNCHBURG, VA

The Remedy/Centra Health Medical Office Building is a 5-story medical building containing operating rooms, procedure rooms, physical therapy center, exam rooms, and office space. The façade is comprised of modular sized brick, utility sized brick, cast stone, and glass. The modular brick is a red Lake Braddock, while the utility brick is a light gray Silver City.



Because the brick had contrasting colors, and were kept together based on size, the result was a seamless façade where the two different sized brick are not independently noticeable. The precast accents provide just enough contrast to the different brick colors to provide warm transitions between the different brick types, as well as the glass and glass mullions.



# CMA CGM AMERICAN HQ RENOVATION

## NORFOLK, VA

### ABC-VA TEAM MEMBERS

Gerloff Painting, Inc.  
Southeastern Mechanical, Inc.

The CMA CGM headquarters renovation exemplifies excellence in interior construction: technically sound, visually modern, and logistically complex. It clearly depicts how a construction team, through strategic planning and open communication, can deliver a transformative space without disrupting essential operations. For its attention to detail, adaptability, and client-first mindset, this project stands out as a model of high-performance interiors in a live working environment.



The full-scale renovation rethinks how space supports business function and performance, coupled with a major cosmetic refresh. The outcome is a headquarters that reflects CMA CGM's standing as a global shipping leader while supporting its teams with comfort, technology, and flexibility.



HONORABLE MENTION

HOURIGAN

MERIT

FEDERAL (\$5M+)

# MONACAN HEALTH CLINIC MADISON HEIGHTS, VA

The Monacan Indian Nation Health Center is a transformational design-build project completed in partnership with two valued clients: the Monacan Indian Nation and the Indian Health Service (IHS). This 14,525 square foot facility was constructed from the ground up to meet the critical healthcare needs of the Monacan community, combining clinical excellence with cultural sensitivity in a facility that will serve generations to come.



This project represents more than a building - it represents healing, equity, and progress. For the Monacan people, this is the first full-scale health facility of its kind: a symbol of sovereignty and self-determination wrapped in modern, high-quality construction.

**ABC-VA TEAM MEMBERS**  
Campostella Builders & Supply Corp.  
Capital Interior Contractors, Inc.  
ECS Mid-Atlantic, LLC  
Hanover Specialties, LLC  
Precision Doors & Hardware, LLC  
VSC Fire & Security

# CENTRAL UTILITY PLANT MODERNIZATION - TE CONNECTIVITY HAMPTON, VA

The Central Utility Plant Modernization showcases ColonialWebb's ability to deliver complex infrastructure upgrades without halting operations. From concept to turnover, the team preserved uptime, supported sensitive manufacturing, and delivered lasting improvements.

This was more than an equipment upgrade - it was a strategic transformation of TE's mechanical and electrical backbone. Deep technical knowledge, tight coordination, and a shared vision across all stakeholders enabled ColonialWebb to meet demanding timelines, eliminate costly downtime, and implement sustainable systems.

The team was able to avoid using a temporary chiller and generator, and delivered cost savings, environmental benefits, and enhanced system intelligence. With zero safety incidents and complete client satisfaction, the project reflects ColonialWebb's core values: safety, empathy, integrity and urgency.



**COLONIALWEBB**  
COMFORT A SYSTEMS USA COMPANY

HONORABLE MENTION

SPECIALTY MEP



MERIT

## LOUISA GREENHOUSE DEVELOPMENT

### LOUISA COUNTY, VA

The Louisa Greenhouse Development is a semi-closed glasshouse with state-of-the-art technology that produces thousands of pounds of lettuce every day. The facility sets a new global standard for technologically advanced, automated greenhouses.

Every detail of the greenhouse was designed and constructed to facilitate the growth process and safe food handling. Coordination of the details happened across the Atlantic and Pacific Oceans with a multi-lingual, multi-national team of engineers, consultants, construction professionals, and industry professionals. Virginia is a national leader in indoor agricultural production, and this project represents new, state-of-the-art job opportunities for residents. The automated greenhouse spans 10 acres and produces eight different types of lettuce.



#### ABC-VA TEAM MEMBERS

Atlantic Constructors, Inc.  
Capital Interior Contractors, Inc.

## TEDDY ANNA

### FIELD MANAGER OF THE YEAR



Teddy Anna, Senior Superintendent at Clark Construction, balances his leadership skills and construction management expertise with a knack for building relationships among team members, clients, and community partners.

As Superintendent, Teddy oversaw the retrofit of two data

center buildings in addition to the construction of two ground-up data centers on a four-building campus in Northern Virginia. He established a team culture that prioritized safety and quality by fostering open dialogue with trade partners, establishing efficient meeting structures that encourage the input of all team members, and emphasizing best practices for planning and executing work.

Notably, Teddy has successfully managed over a million man-hours of work without a lost-time or recordable injury in the last three years, a testament to his collaborative leadership style, which motivates teams to perform at their best together. As a result of these achievements, Teddy was quickly promoted to Senior Superintendent.



## NATHAN CAPISTRAN

### CRAFT PROFESSIONAL OF THE YEAR

CARPENTRY/CONCRETE



Nathan Capistran exemplifies the highest standards of craftsmanship, discipline, and leadership in the construction industry. Since joining MEB as a carpenter in 2019, Nathan has grown into a critical team member and was promoted to Foreman in 2022. His work on the P678 Dry Dock 8 project at the Norfolk Naval Shipyard has been nothing short of exceptional, and he is a key reason the project is currently nine months ahead of schedule.

Nathan brings more than technical skill to the job, he leads by example. He is always in the trenches with his crew, never assigning work he is not prepared to do himself. His approach fosters respect, accountability, and unity among the field team. He has also gone out of his way to expand his technical knowledge, particularly in formwork design, which has significantly enhanced the team's capability on complex structures. Quality is never compromised under Nathan's watch. His work is consistently accurate, clean, and built to spec.



## KELLY FELLETTER PROJECT ADMINISTRATOR OF THE YEAR



For 25 years, Kelly Felletter has been the quiet force behind some of Hampton Roads' most iconic structures. As a Senior Project Administrator at W. M. Jordan Company, Kelly doesn't just support projects—she nurtures them, guiding each one with care, precision, and a deep love for helping people.

Outside the office, Kelly's heart for service continues. She's a registered volunteer with the Food Bank and plans to expand her volunteer work with the Food Bank after retirement.

Kelly Felletter may not seek the spotlight, but her impact is undeniable. She's the steady hand, the wise guide, and the compassionate soul behind decades of success—and she's not done yet.

*"She leads quietly but powerfully, always ready to lend a hand, offer guidance, or share a laugh. Her contributions have shaped not just our projects, but our people and our culture. We're all stronger because of her."* – Ronald J. Lauster, II, President, W. M. Jordan Company



## DALTON DAVIDSON PROJECT MANAGER OF THE YEAR



For over a decade, Dalton Davidson has exemplified what it means to be a Project Manager of the highest caliber, demonstrating mastery of technical skills, exceptional leadership, and a tireless commitment to the construction industry. Since graduating from Virginia Tech in 2014, Dalton has played a critical role in the growth and success of Power Electric Company, managing hundreds of projects and consistently delivering excellence in safety, schedule, quality, and client satisfaction.

In service to the industry, Dalton is a prominent member of the Associated Builders and Contractors (ABC), where he currently serves on the ABC-VA Executive Committee and as Chair of the ABC Political Action Committee. His leadership and advocacy reflect a deep commitment to the advancement of the merit shop philosophy and the broader construction community. Dalton also previously served as the 2023-2024 Workforce Development Chair for the Hampton Roads region, where he championed apprenticeship training and future workforce initiatives.



## NEW CRESTWOOD ELEMENTARY SCHOOL CHESAPEAKE, VA

The Crestwood Elementary School project is a 3-story, 138,000 square foot new build. The new school is designed to have state-of-the-art facilities including 9 HVAC rooftop units, 8 ductless split systems, 1 ducted split-system air handling unit, 90 VAV units, siphonic storm drain system, booster pumps, and a building automation system to monitor all facilities.

The original contract construction timeline was 16 months to completion, and the team was able to complete it in just 10 months. The HVAC and plumbing teams worked multiple crews on overtime to push the project out of the ground, rough-ins completed, and the building online with controlled condition spaces all within 10 months. This advanced turnover gave the school system valuable extra time to focus on the logistics of moving in and all necessary preparation to open for the new school year.



**MEDICAL (\$15M+)**  
NEW CONSTRUCTION

## VETERANS AFFAIRS HAMPTON ROADS COMMUNITY BASED OUTPATIENT CLINIC

CHESAPEAKE, VA

W. M. Jordan Company partnered with The Molasky Companies and Gresham Smith architects to construct a cutting-edge outpatient clinic for the U.S. Department of Veterans Affairs. Located on a 24.5-acre site next to Chesapeake Regional Hospital, the Hampton Roads Community Based Outpatient Clinic serves as a vital healthcare hub for Veterans in the region. Over 70% of eligible Veterans live on the Southside of Hampton Roads, and this facility eliminates the need to travel to the VA hospital in Hampton, which is often hindered by tunnel traffic and construction.



The clinic earned two Green Globes for its environmentally responsible design and construction. The site received top marks for minimizing ecological disruption, erosion control, tree preservation, and stormwater management.

### ABC-VA TEAM MEMBERS

Bates Contracting Services, Inc.  
Forsythe, Inc  
L.E. Ballance Electrical Service, Inc.  
Prestige Floors, Inc.  
Professional Fire Protection Systems  
Roof Services, a Tecta America  
Company, LLC  
Total Hardware, Inc.

## HARBOUR VIEW HOSPITAL

SUFFOLK, VA

### ABC-VA TEAM MEMBERS

Macsons, Inc.  
Watson Electrical Construction  
Company, LLC

The new Bon Secours Harbour View Hospital is a transformative addition to the healthcare landscape of Northern Suffolk and Western Hampton Roads. This 95,000 square foot, surgically-focused hospital is a long-awaited response to the growing demand for local, high-quality care.

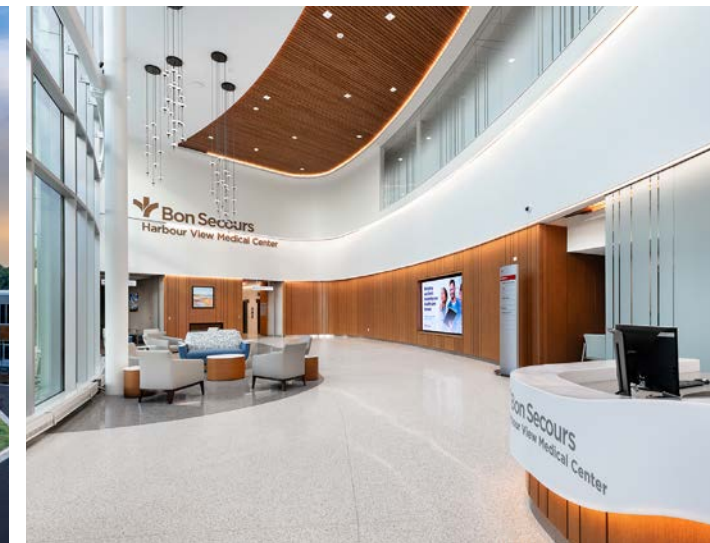
Situated adjacent to the existing Bon Secours Health Center on the Harbour View campus, this three-story facility includes 18 medical/surgical beds, a 15-bay emergency department, state-of-the-art operating rooms, and advanced imaging services. Delivered through a carefully sequenced and value-driven construction process, the hospital represents a significant investment in both community well-being and healthcare infrastructure.



**MEDICAL (\$15M+)**  
NEW CONSTRUCTION

W.M.  
*Jordan*  
COMPANY

HONOR



HOURIGAN

HONOR

**MEDICAL (\$15M+)**  
NEW CONSTRUCTION

## ORTHOVIRGINIA WATKINS CENTRE MIDLOTHIAN, VA

Set in Chesterfield County's emerging Watkins Centre development, the new OrthoVirginia medical office building represents a bold step forward in musculoskeletal care for Central Virginia.



At 77,000 square feet, this ground-up, specialty orthopedic destination brings outpatient surgery, imaging, physical therapy, and clinical office spaces together under one roof, providing patients with seamless, start-to-finish care in a single, state-of-the-art environment.

The innovative building is a reflection of OrthoVirginia's growth and leadership in the field and a testament to the power of collaboration, precision planning, and creative problem-solving in complex healthcare construction.

### ABC-VA TEAM MEMBERS

Architectural Products of Virginia  
Atlantic Constructors, Inc.  
Capital Interior Contractors, Inc.  
Hercules Fence  
KONE, Inc.

## MID-ATLANTIC TRIBAL HEALTH CLINIC RENOVATION & EXPANSION CHARLES CITY, VA

### ABC-VA TEAM MEMBERS

Acoustical Solutions  
Campostella Builders & Supply Corp.  
Dominion Contract Carpets, Inc.  
Ferguson Enterprises, LLC  
Old Dominion Mechanical

The Mid-Atlantic Tribal Health Clinic is a landmark dual-facility healthcare project completed in service to two valued clients: the Indian Health Service (IHS) and the Federally Recognized Indigenous Tribes in the Commonwealth of Virginia. Located in Charles City, this project represents a bold step forward in providing high-quality, culturally sensitive healthcare infrastructure for underserved tribal communities.



The project included the full-site development and new construction of two independent structures: a 22,319 square foot primary care clinic and a 3,385 square foot support and storage facility. Together, these buildings serve as a regional healthcare hub, offering a broad range of services. This turnkey delivery encompassed all phases of work—from site clearing and earthwork to foundation, framing, roofing, MEP systems, and medical-grade finishes.

**MEDICAL (\$15M+)**  
NEW CONSTRUCTION

**HOURIGAN**



**MERIT**

**HONORABLE MENTION**

# Building Communities.

## Developing Opportunities.

Congratulations to all of the ABC VA Excellence in Construction Awards winners! Thank you for your commitment to our industry and the communities we serve.

W.M.  
*Jordan*  
COMPANY  
Construction • Development • [wmjordan.com](http://wmjordan.com)



Mechanical & Plumbing Insulation



Abatement, Remediation & Demolition

BRANCHES IN:

📍 Virginia 📍 Maryland 📍 North Carolina

[www.retroaim.com](http://www.retroaim.com)

# m≡b.

full-service construction firm.  
[www.meb.group](http://www.meb.group)

aligning your vision and functional needs to create spaces that inspire.



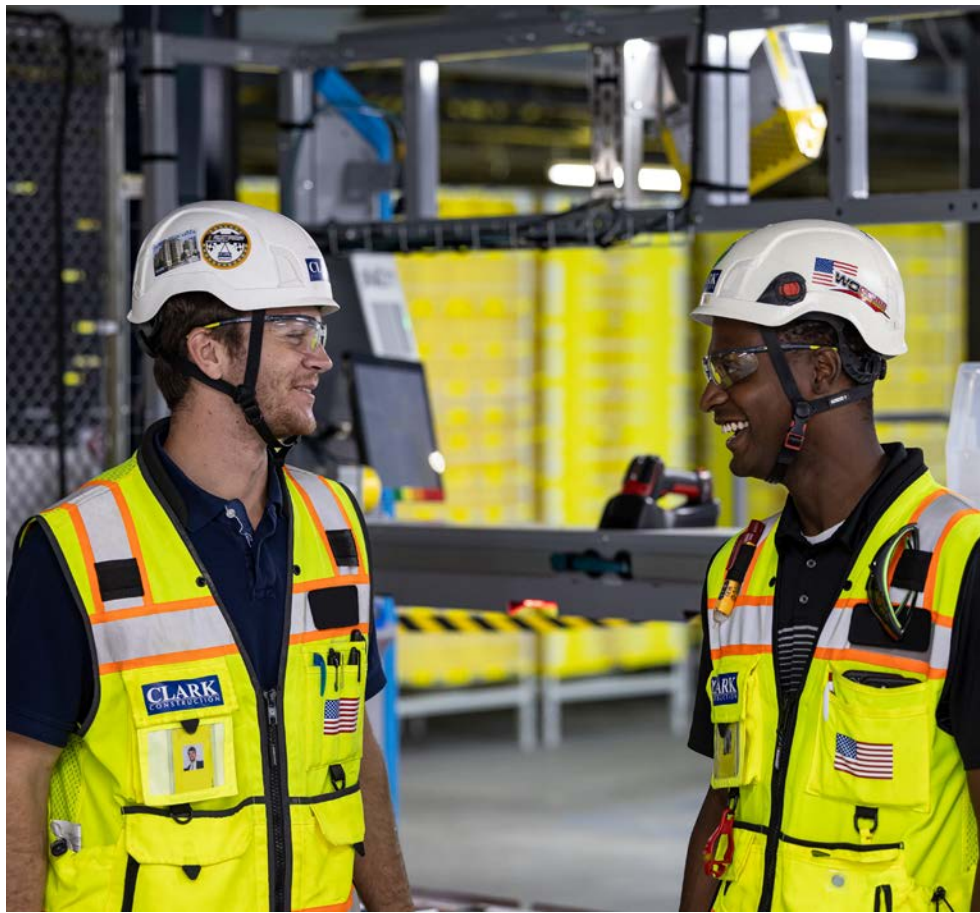
# PASSIONATELY SHAPING TOMORROW, TODAY.

A FULLY INTEGRATED CONSTRUCTION / DEVELOPMENT FIRM



[WWW.HOURIGAN.GROUP](http://WWW.HOURIGAN.GROUP)

HOURIGAN



# Proud to Build What Matters, Together

Clark is a proud supporter of Associated Builders and Contractors of Virginia.



**SYNCON**  
Building The Future with Integrity and Excellence.

SYNCON IS A PROUD MEMBER AND SUPPORTER OF ABC-VA

www.synconllc.com  
COMMERCIAL - FEDERAL - RESIDENTIAL

**BUILDING VIRGINIA TOGETHER**

The Balfour Beatty team is driven by one mission – to be a relentless ally for the success of each and every dream we are entrusted to build. We develop customized solutions for our clients to deliver high-quality spaces that will enrich our surrounding neighborhoods and community.

**Balfour Beatty**

<https://www.balfourbeattyus.com/teams/buildings/richmond>

25th ANNIVERSARY  
**POWER**  
ELECTRIC COMPANY  
EST. 1993

Woods Rogers is pleased to support the

## ABC-VA Hampton Roads' 2025 Excellence in Construction Awards

Learn more about how we deliver practical, results-oriented advice for the construction industry at [woodsrogers.com](http://woodsrogers.com).

## THANK YOU, SPONSORS!

### EVENT



### GOLD

Clark Construction  
Hourigan  
MEB

RetroAIM  
W.M. Jordan Company

### BAR



### RECEPTION



### PROGRAM



### AWARD

### INSTRUCTOR OF THE YEAR





Virginia  
**2025 Excellence  
in Construction®**  
Awards

