



FOR IMMEDIATE RELEASE

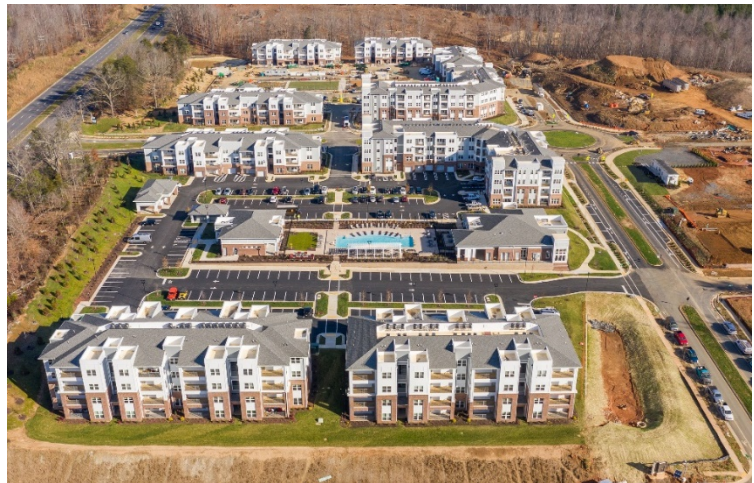
Contact: [Christine Gustafson](#)

The Breedon Company & Breedon Construction
(757) 486-1000 ext. 8807

**Breedon Construction Announces Construction Completion
of Charlottesville, Virginia Luxury Apartment Community**

Richmond, VA, January 31, 2021 -- Breedon Construction is proud to announce the completion of a newly constructed luxury multifamily project in Charlottesville, VA, The Archer at Brookhill Apartments. The project was completed for the developer, Castle Development Partners; Breedon Construction served as the general contractor.

The \$45 million project began in January 2019. While the global pandemic looked to create various obstacles, the project was ultimately completed prior to the scheduled delivery date. Breedon Construction brought its long-standing development and operational expertise to the development of Archer at Brookhill Apartments, considered to be an integral piece of the evolving Charlottesville fabric.



The Archer of Brookhill Apartments offers modern residences ranging from one- to three-bedroom floorplans, fitted with contemporary finishes. Key amenities for residents include outdoor green space with plenty of seating areas, dog park, a stand-alone health club and brew garden complete with grilling and dining area. Situated on more than 19 acres, the project included construction of 316 units.

With offices in Richmond and Virginia Beach, Breedon Construction is ranked by *Multi-Housing News* as one of the largest multifamily developers in the nation.

ABOUT BREEDEN CONSTRUCTION

Richmond, Virginia based Breedon Construction is a design and build general contracting company committed to construction excellence, creativity, and industry leadership. The firm has been providing general contracting services for The Breedon Company's own portfolio for more than five decades. In that time, Breedon Construction has constructed over 10,000 multifamily units, over 2 million square feet of commercial, retail and mixed-use space, countless tenant improvements and up-fits, numerous residential subdivisions and 1,700 residential homes. In 2011, Breedon Construction opened services to third-party clients in need of its expertise in all phases of the design, building and development of multifamily, mixed-use communities, commercial office and retail properties and tenant up-fits. The vast capabilities of Breedon Construction have made them one of the most dynamic firms of its kind in the country.